

BREXIT and the EU Workforce – Further NHS Analysis

Northumberland – Health and Wellbeing OSC

Tuesday April 30th, 2019

Dr Bernard Groen

Developing people
for health and
healthcare

www.hee.nhs.uk



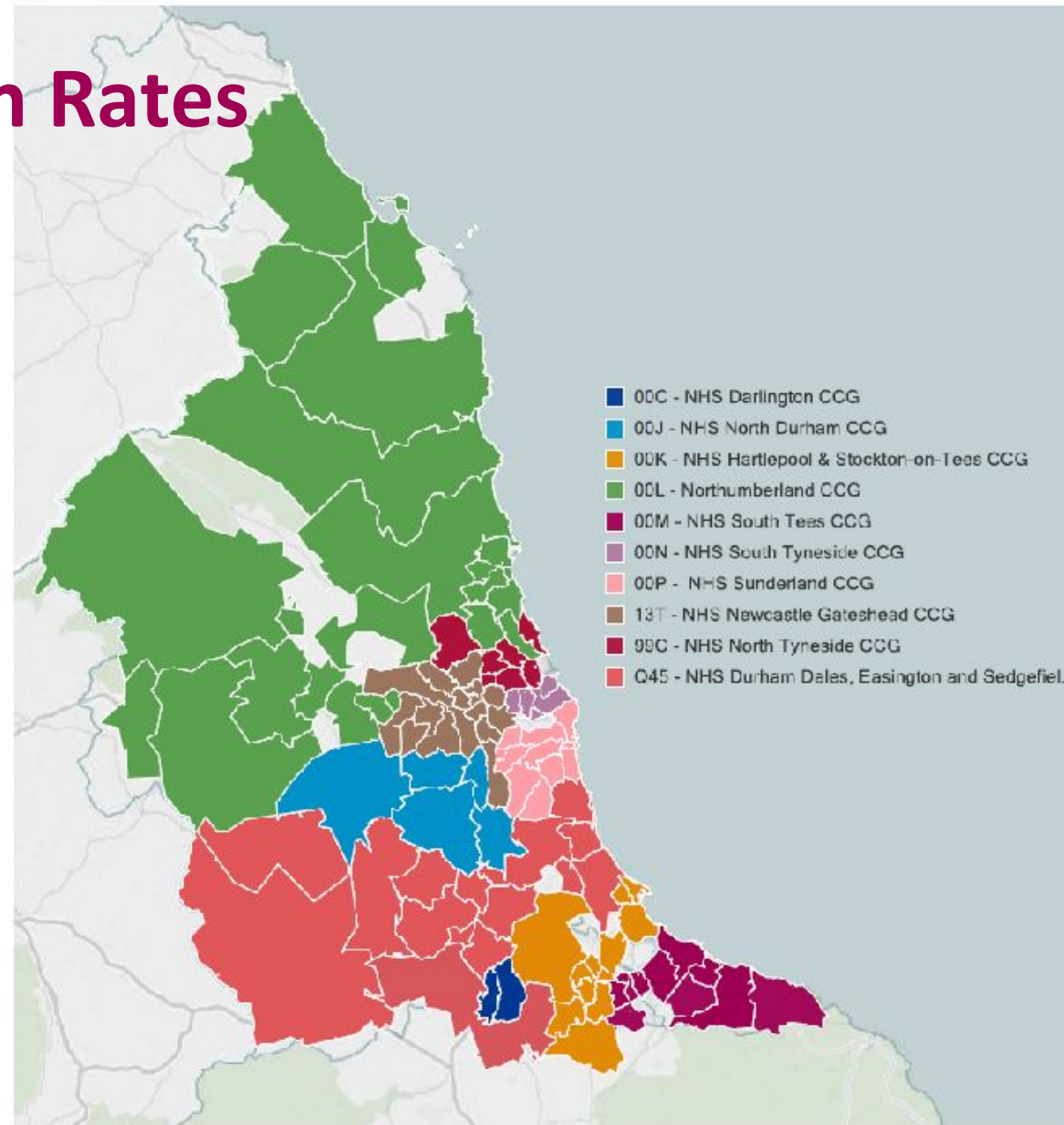
Workforce Challenges

Outline of Presentation

- 1. Primary Care: Retirement Profile**
- 2. Primary Care: Retirement Profile (GPs)**
- 3. Secondary Care: Nursing Profile**
- 4. Secondary Care: BREXIT**

Practice Submission Rates

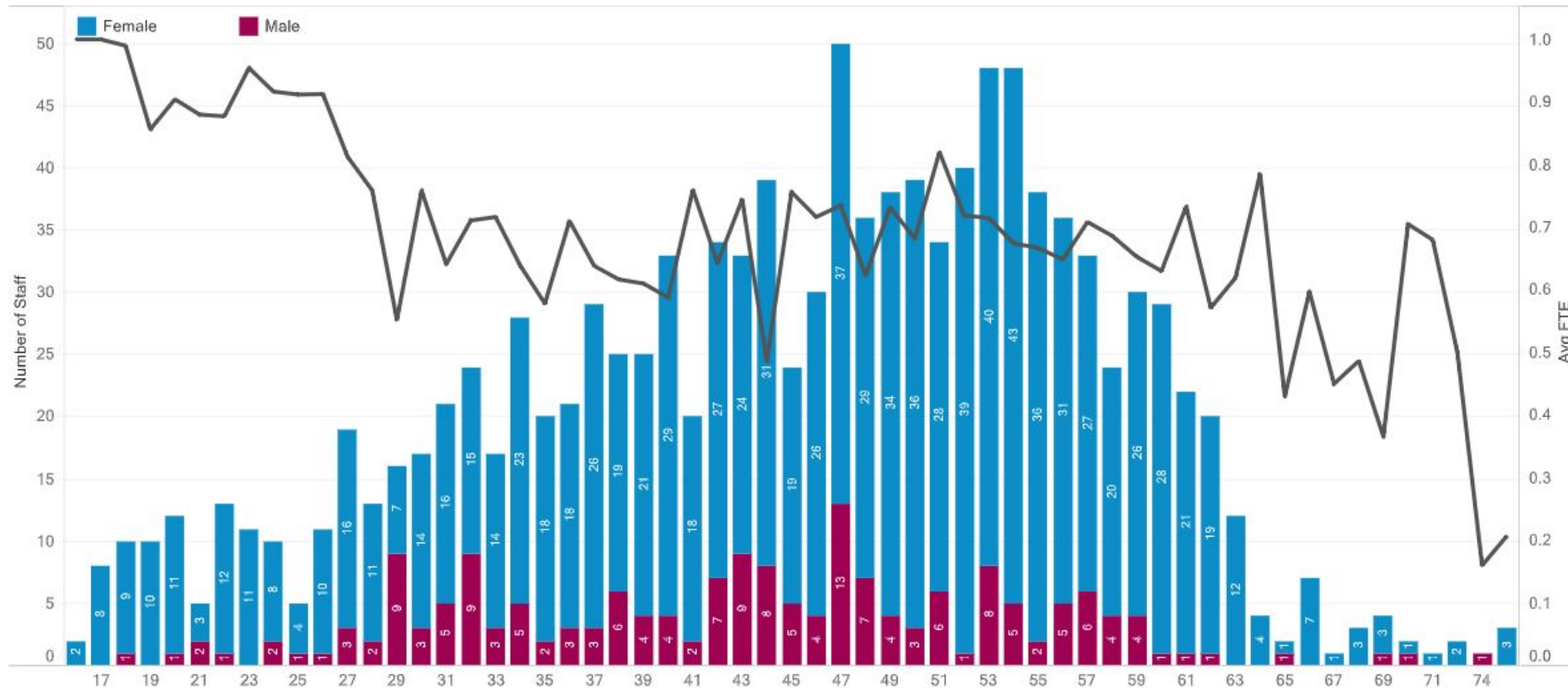
All GP Practices NE(!)



Primary Care Workforce – Retirement Profile

The data shows;

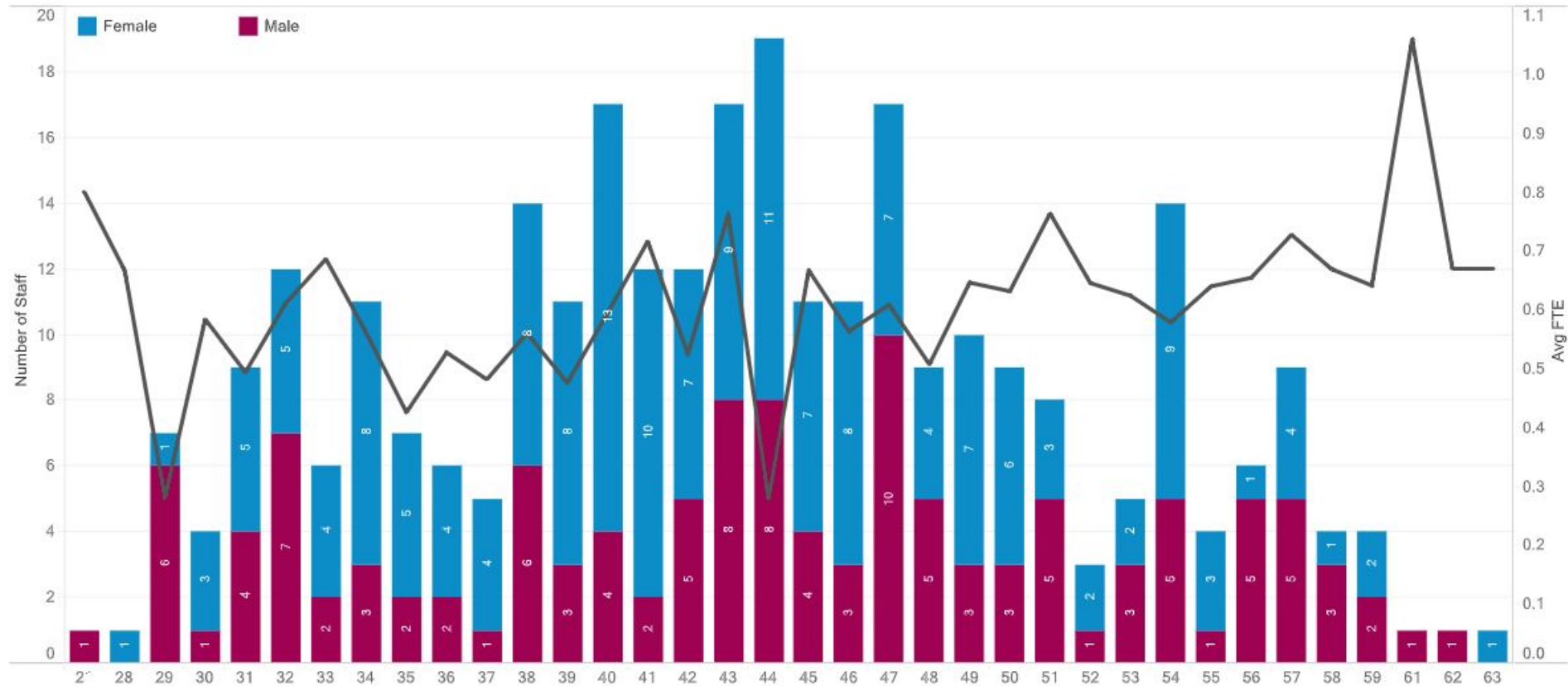
- 84.60% (1,022) of staff employed are female
- 15.40% (186) of staff employed are male
- 35.65% (425) of staff are aged 45 – 55
- 12.75% (152) of staff are aged 56 - 60
- 5.62% (67) of staff are aged 61 – 66
- 1.43% (17) of staff are aged over 67



Primary Care Workforce – Retirement Profile (GPs)

The data shows;

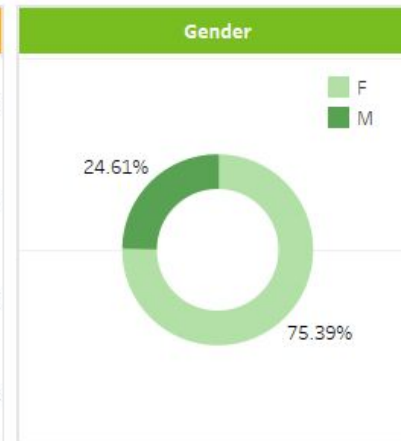
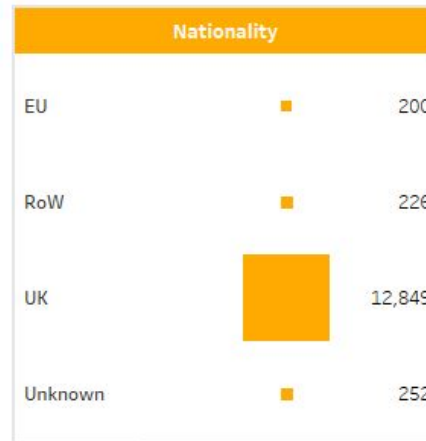
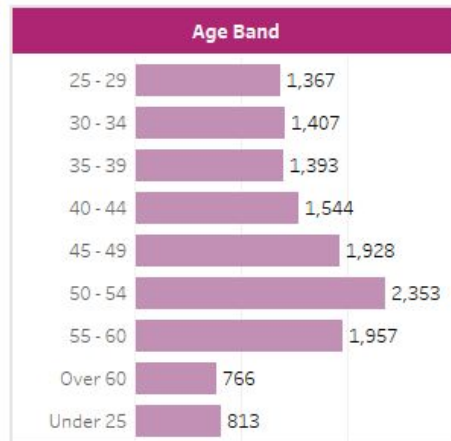
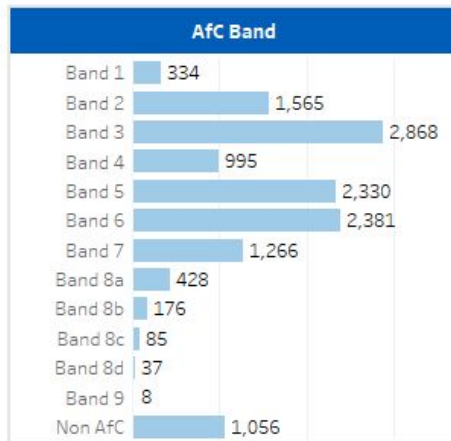
- 58.28% (183) of staff employed are female
- 41.72% (131) of staff employed are male
- 33.89% (101) of staff are aged 45 – 55
- 7.72% (23) of staff are aged 56 - 60
- 1.01% (3) of staff are aged 61 – 66
- 0.00% (0) of staff are aged over 67



Secondary Care: Workforce Intelligence



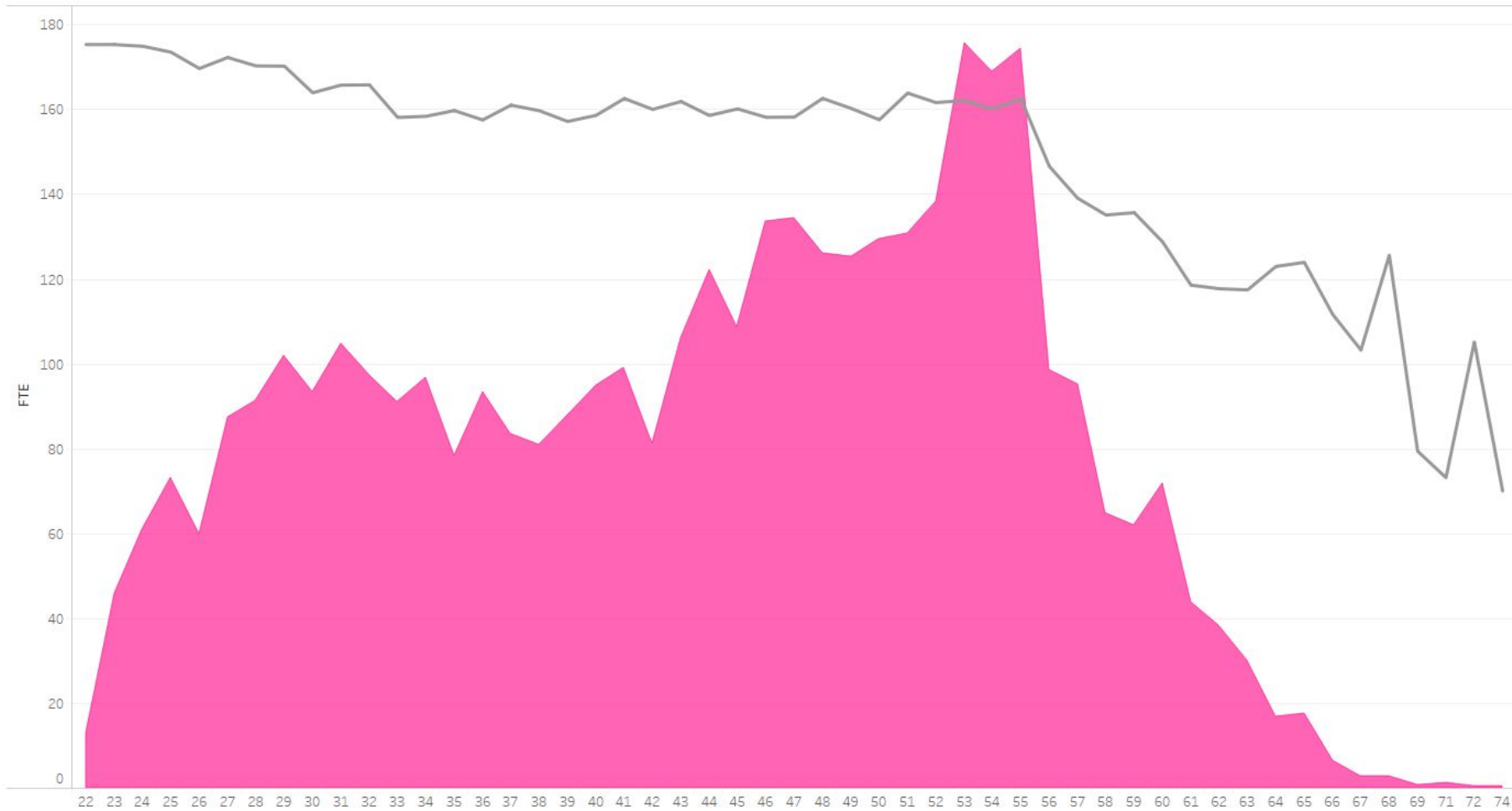
Month: October 2018
Local Office: North East
STP: All
Organisation: Multiple values
Staff Group: All
Occ Code Named: All
Occupation Code: All



3,329
 10,199

Secondary Care: Nursing Profile

Age profile



Secondary Care: BEXIT

Overall figures by Staff Group & Status						
Organisation	European		Rest of World		UK	
Staff Group	WTE	HC	WTE	HC	WTE	HC
Northumberland Tyne and Wear NHS FT	112.33	122.00	110.87	127.00	5,559.15	6,088.00
Northumbria Healthcare NHS FT	96.13	108.00	119.86	129.00	7,395.81	8,673.00
Grand Total (both trusts)	208.46	230.00	230.72	256.00	12,954.96	14,761.00

Secondary Care: BEXIT

<i>Medical and Dental</i>					
<i>Overall figures & split by Medical Specialty & Status</i>					
Organisation	% Split				Total WTE
Staff Group	EU	RoW	UK	Unknown	Grand Total
<i>Northumberland Tyne and Wear NHS Foundation Trust</i>	1.94%	1.92%	96.06%	0.09%	5787.35
Forensic Psychiatry	5.78%	5.78%	82.66%	5.78%	17.30
General Psychiatry	16.21%	22.58%	60.04%	1.17%	170.53
Old Age Psychiatry	11.01%	7.53%	73.92%	7.53%	26.55
<i>Northumbria Healthcare NHS Foundation Trust</i>	1.24%	1.54%	95.24%	1.98%	7765.57
General Surgery	10.09%	13.39%	73.72%	2.80%	35.68
Trauma and Orthopaedic Surgery	3.33%	5.00%	88.34%	3.33%	60.05
<i>Grand Total</i>	1.54%	1.70%	95.59%	1.17%	13552.92

Secondary Care: BEXIT

Medical & Dental - Northumbria Healthcare NHS FT

Rank	Specialty	% EU	As WTE	Of Total WTE for Specialty
1	General Surgery	10.09%	3.60	35.68
2	Anaesthetics	6.19%	3.00	48.43
3	Paediatric Surgery	40.40%	2.00	4.95
4	Cardiology	14.29%	2.00	14.00
5	Other Specialties	7.89%	0.60	7.60

Medical & Dental - Northumberland Tyne & Wear NHS FT

Rank	Specialty	% EU	As WTE	Of Total WTE for Specialty
1	General Psychiatry	16.21%	27.65	170.53
2	Old Age Psychiatry	11.01%	2.92	26.55
3	Child and Adolescent Psychiatry	5.78%	2.00	34.60
4	Rehabilitation Medicine	8.47%	1.00	11.80
5	Forensic Psychiatry	5.78%	1.00	17.30

Nursing & Midwifery - Northumbria Healthcare NHS FT

Rank	Area of Work	% EU	As WTE	Of Total WTE for Specialty
1	General Surgery	4.27%	3.84	89.85
2	Research and Development	6.16%	1.00	16.25
3	Old Age Psychiatry	2.53%	1.00	39.51
4	Gastrointestinal and Urodynamic Sci	3.66%	0.80	21.85
5	Stroke	2.61%	0.80	30.63

Nursing & Midwifery - Northumberland Tyne & Wear NHS FT

Rank	Area of Work	% EU	As WTE	Of Total WTE for Specialty
1	Neurorehabilitation	3.51%	2.52	71.79
2	Rehabilitation Psychiatry	2.05%	2.00	97.45
3	Old Age Psychiatry	0.90%	2.00	221.84
4	Liaison Psychiatry	0.80%	2.00	250.64
5	Child and Adolescent Psychiatry	0.73%	2.00	272.57

Questions and Contact Details

Dr Bernard Groen

Strategic Planning Lead

NHS Health Education England – Cumbria and North East England

bernard.groen@hee.nhs.uk or bernard.groen@nhs.net